

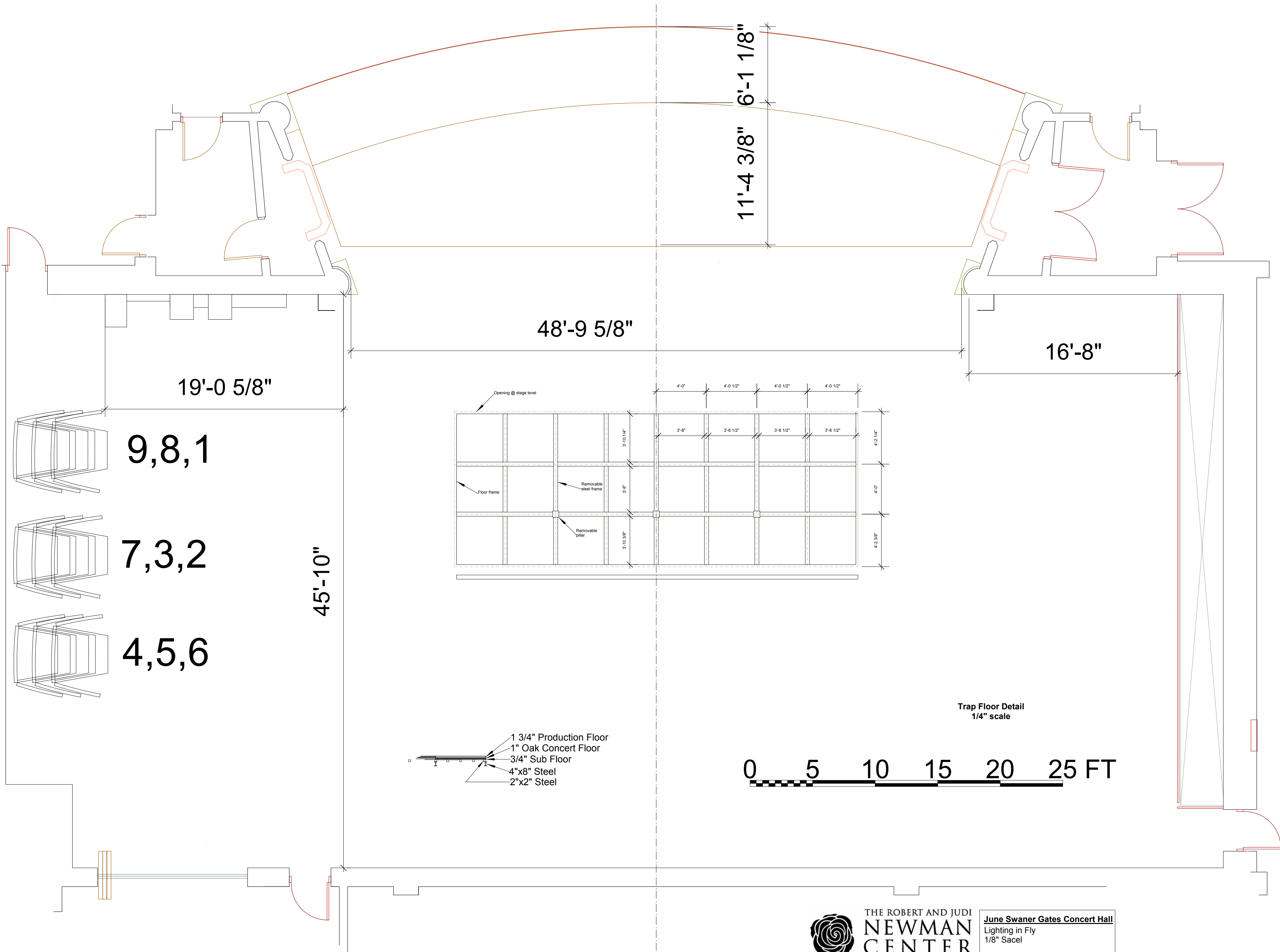
Floor Box

A	548, 549, 550
B	551, 552, 553
C	554, 555, 556
D	557, 558, 559
E	560, 561, 562
F	563, 564, 565
G	566, 567, 568
H	569, 570, 571
I	572, 573, 574
J	575, 576, 577
K	578, 579, 580
L	581, 582, 583

GATES STAGE
193



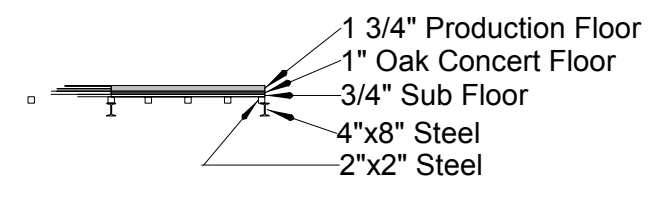
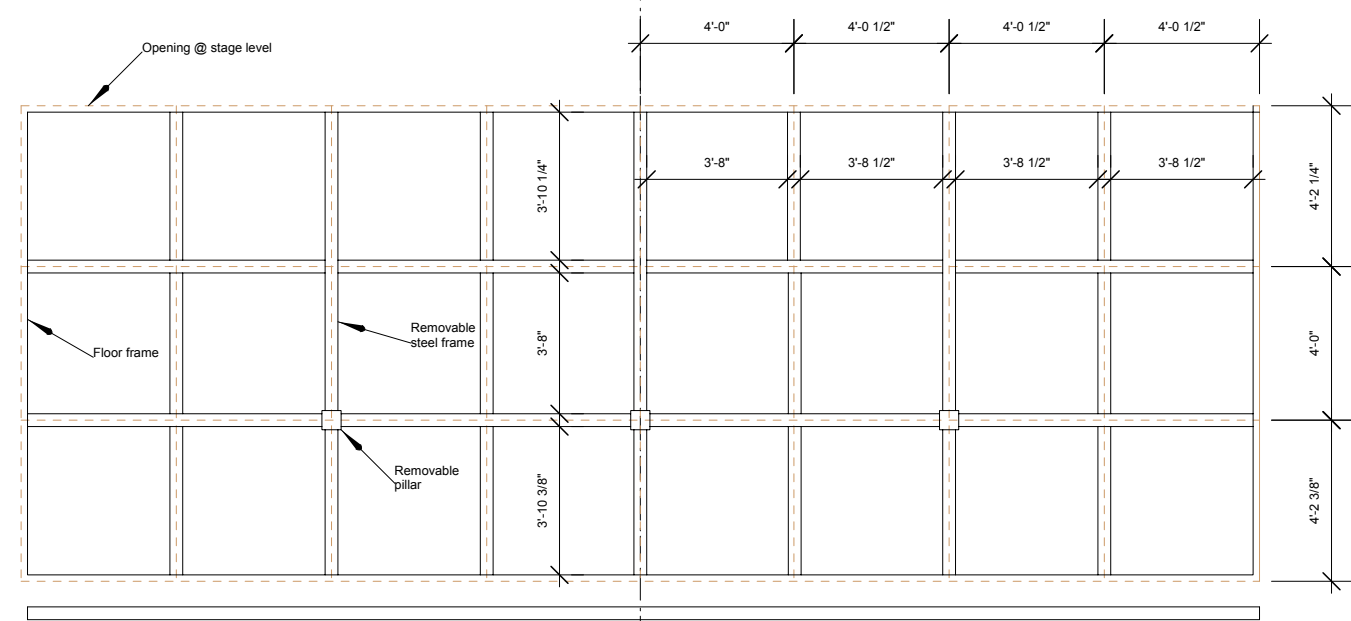
June Swaner Gates Concert Hall
Lighting in Fly
1/8" Saclel



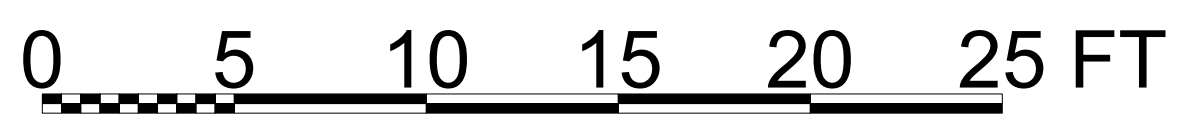
9,8,1

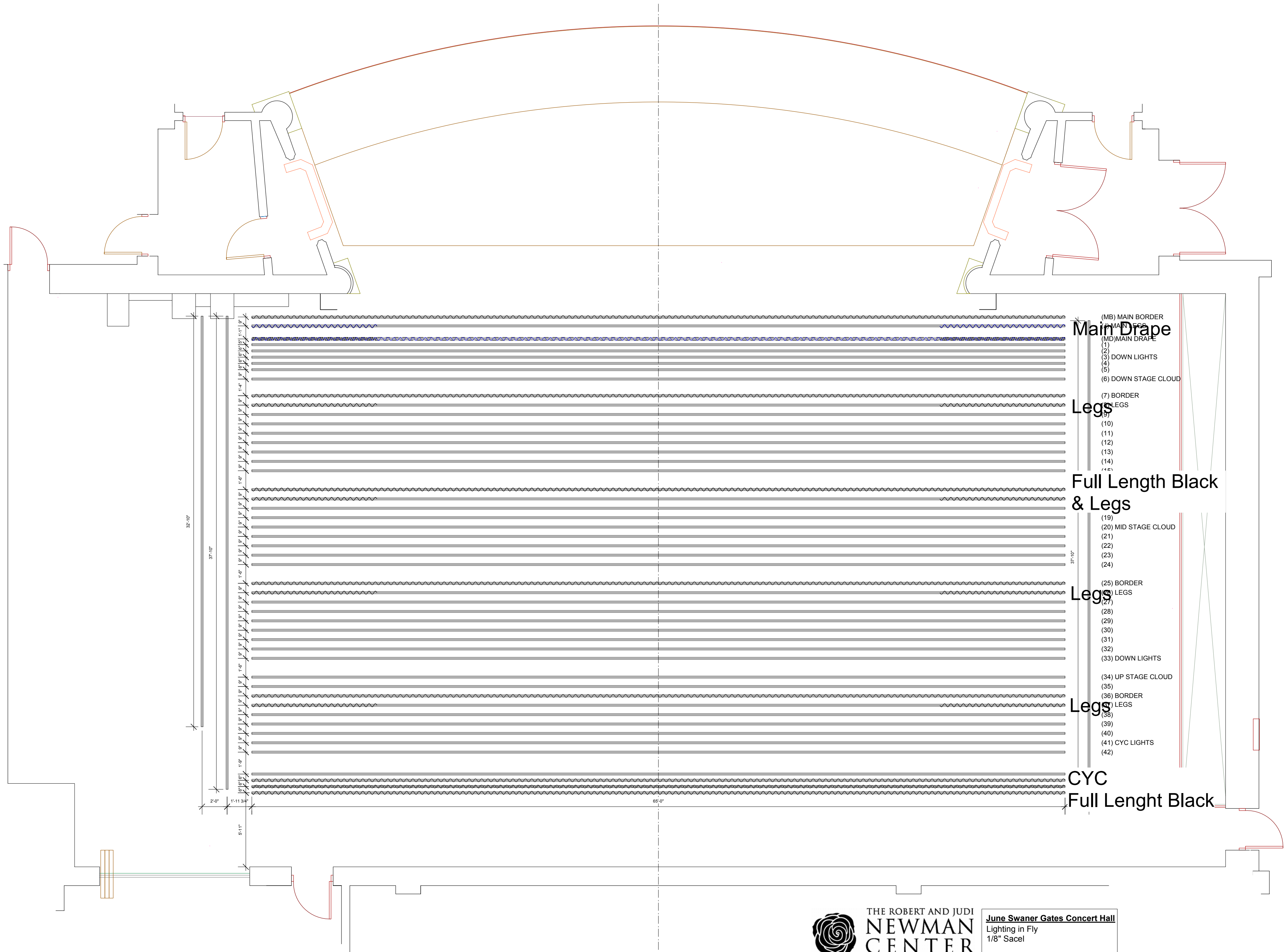
7,3,2

4,5,6



Trap Floor Detail
1/4" scale





(MB) MAIN BORDER
 (MA) MAIN DRAPE
 (MD) MAIN DRAPE
 (1)
 (2)
 (3) DOWN LIGHTS
 (4)
 (5)
 (6) DOWN STAGE CLOUD

(7) BORDER
 (8) LEGS
 (9)
 (10)
 (11)
 (12)
 (13)
 (14)
 (15)

Full Length Black
 & Legs

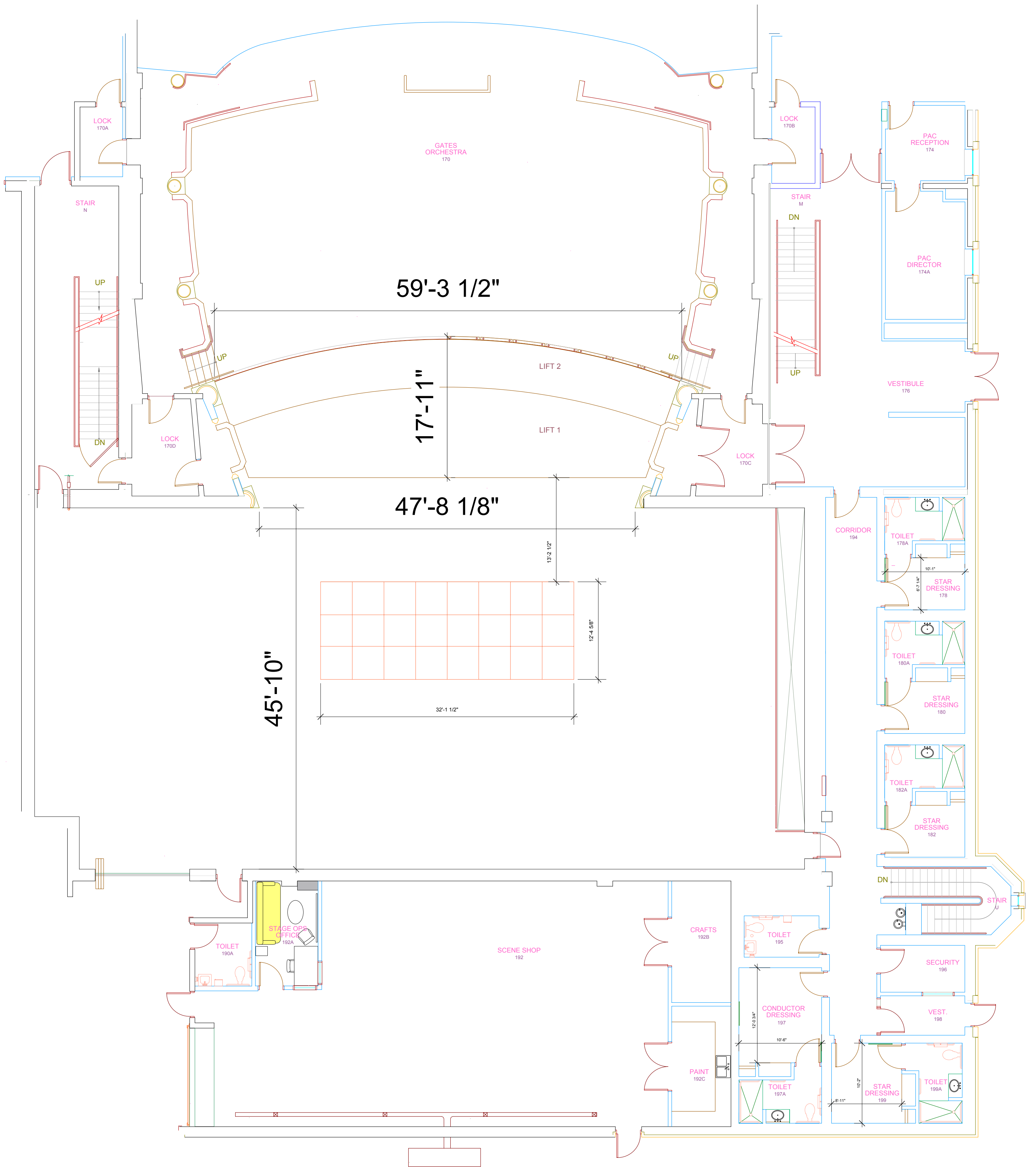
(19)
 (20) MID STAGE CLOUD
 (21)
 (22)
 (23)
 (24)

(25) BORDER
 (26) LEGS
 (27)
 (28)
 (29)
 (30)
 (31)
 (32)
 (33) DOWN LIGHTS

(34) UP STAGE CLOUD
 (35)
 (36) BORDER
 (37) LEGS
 (38)
 (39)
 (40)
 (41) CYC LIGHTS
 (42)

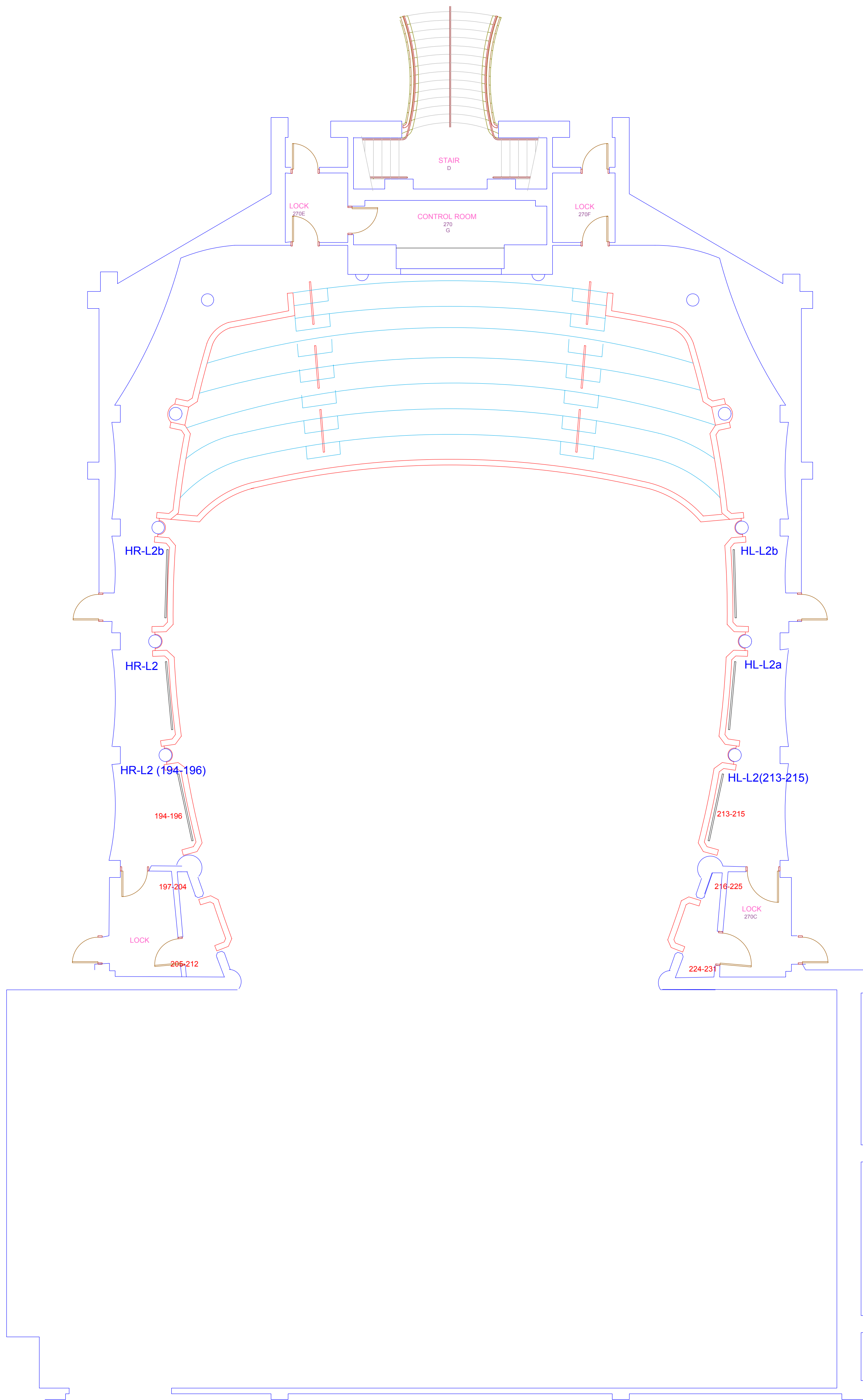
Legs

CYC
 Full Length Black



THE ROBERT AND JUDI
NEWMAN
CENTER
 UNIVERSITY OF DENVER

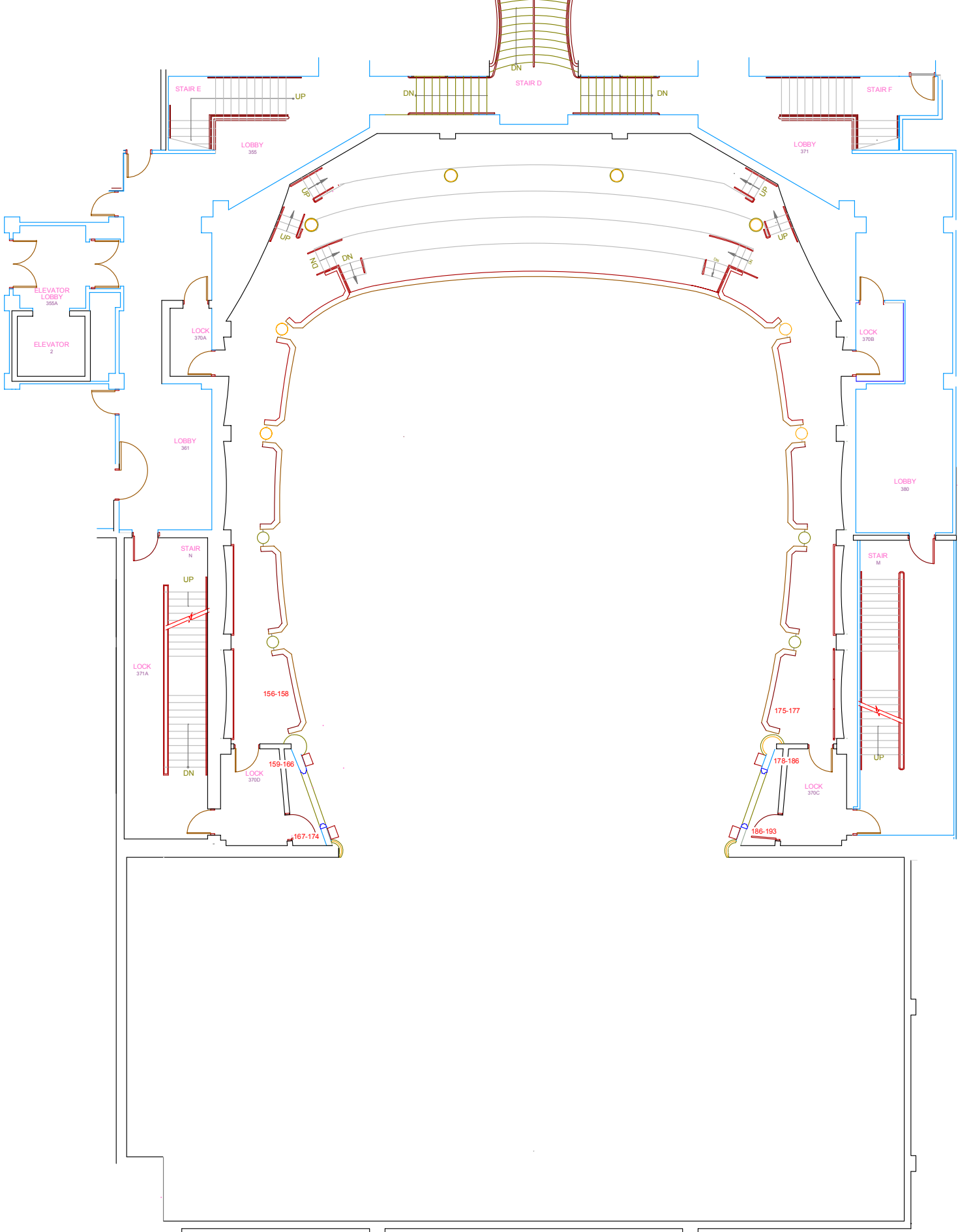
June Swaner Gates
 Concert Hall (level 1)
 1/8" Scale
 0 5 10 15 20 FT



THE ROBERT AND JUDI
NEWMAN
CENTER
 UNIVERSITY OF DENVER

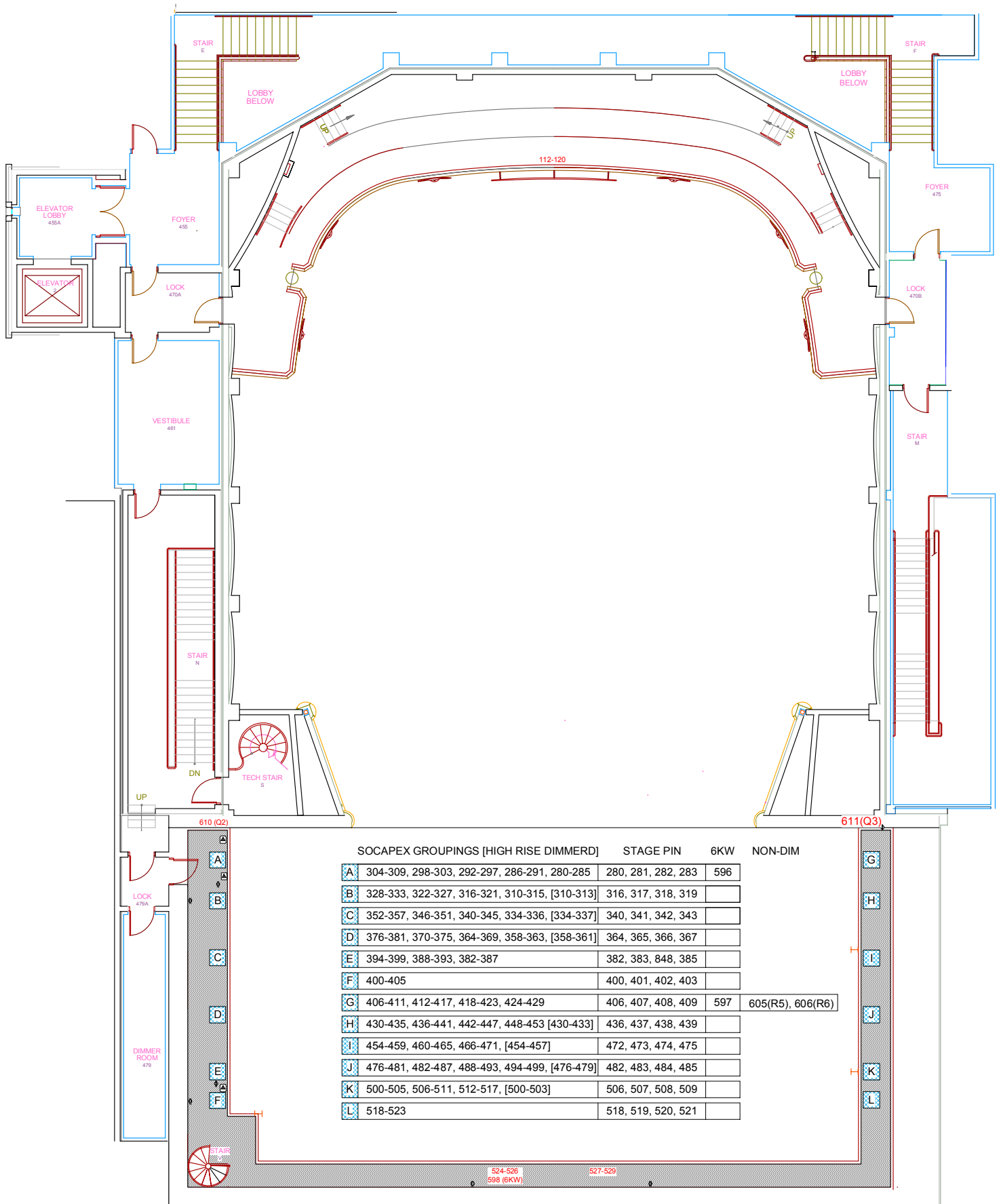
June Swaner Gates
 Concert Hall (level 2)
 1/8" scale





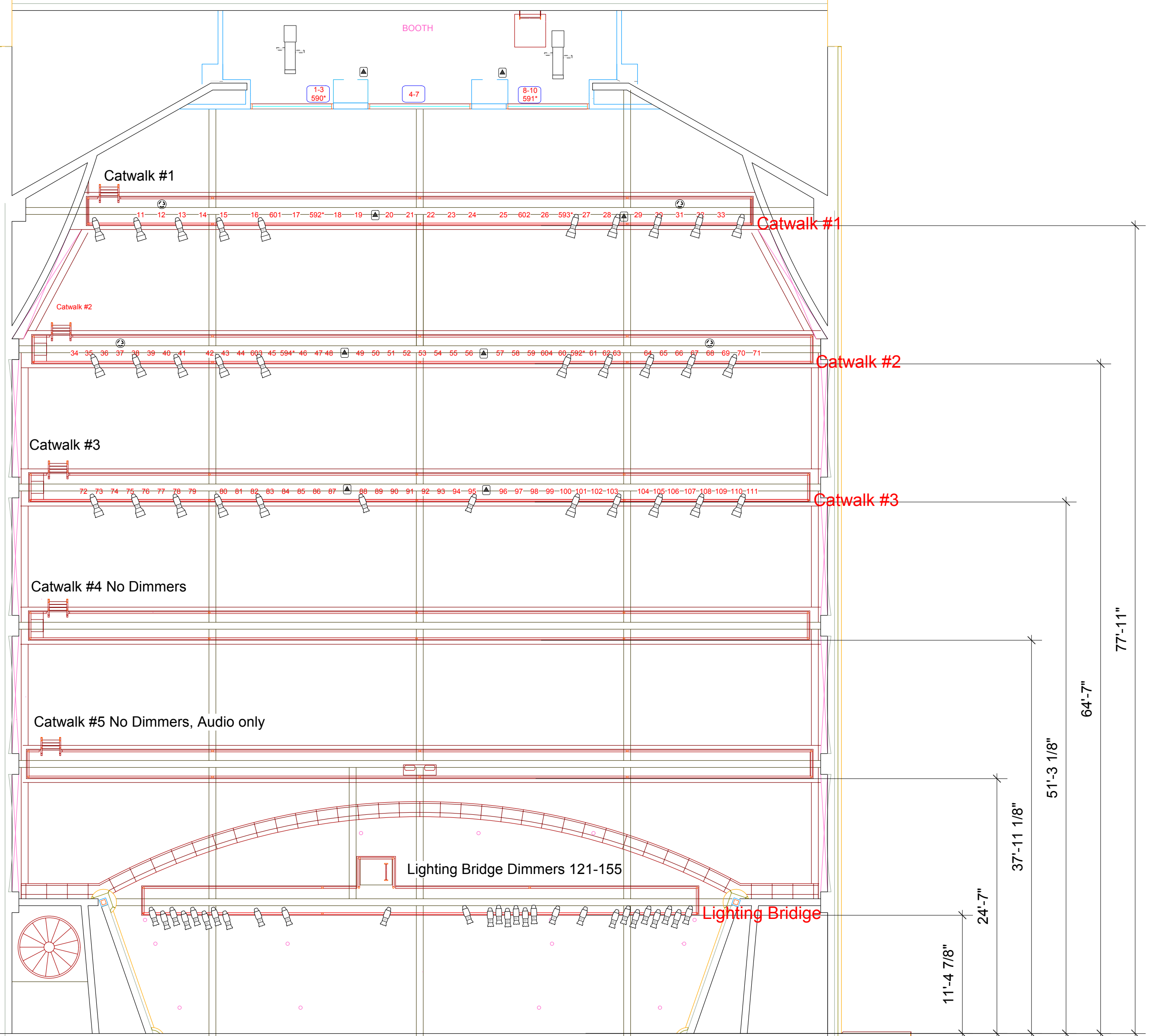
THE ROBERT AND JUDI
NEWMAN
CENTER
 UNIVERSITY OF DENVER

June Swaner Gates
 Concert Hall (level 3)
 0 5 10 15 20 FT



THE ROBERT AND JUDI
NEWMAN
CENTER
 UNIVERSITY OF DENVER

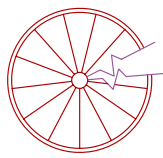
June Swaner Gates
 Concert Hall (level 4)
 0 5 10 15 20 FT



GRIDIRION CIR (DOWN LEFT)
256-261 (SOCAPEX)
256, 257, 258, 259 (STAGE PIN)

GRIDIRION CIR (DOWN RIGHT)
262-267 (SOCAPEX)
262, 263, 264, 265 (STAGE PIN)

OPEN TO BELOW



GRIDIRION CIR (UP LEFT)
268-273 (SOCAPEX)
268, 269, 270, 271 (STAGE PIN)
100AMP 120/208VOLT 3PHASE SWITCH #5

GRIDIRION CIR (UP RIGHT)
274-279 (SOCAPEX)
274, 275, 276, 277 (STAGE PIN)

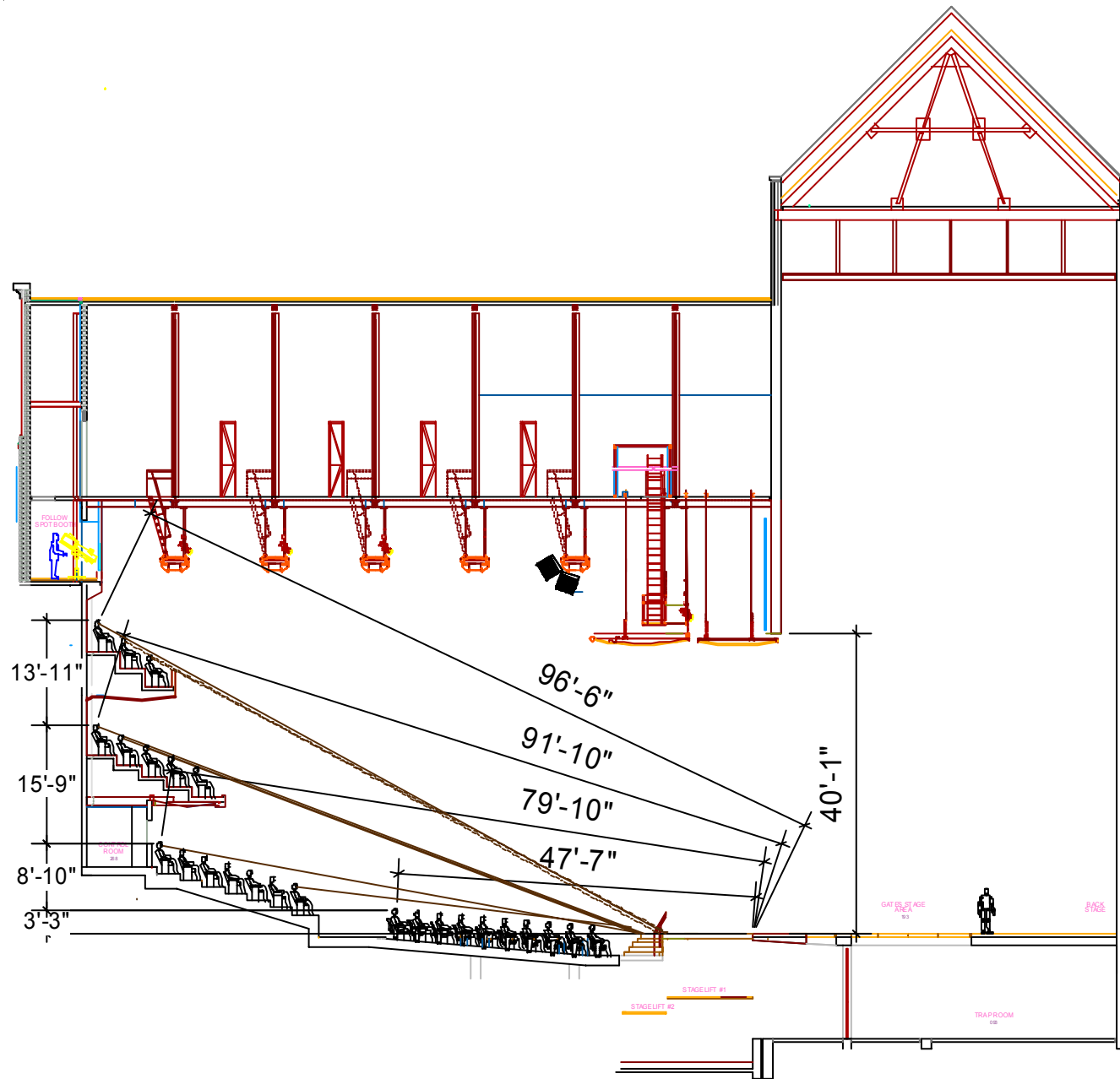


THE ROBERT AND JUDI
NEWMAN
CENTER
UNIVERSITY OF DENVER

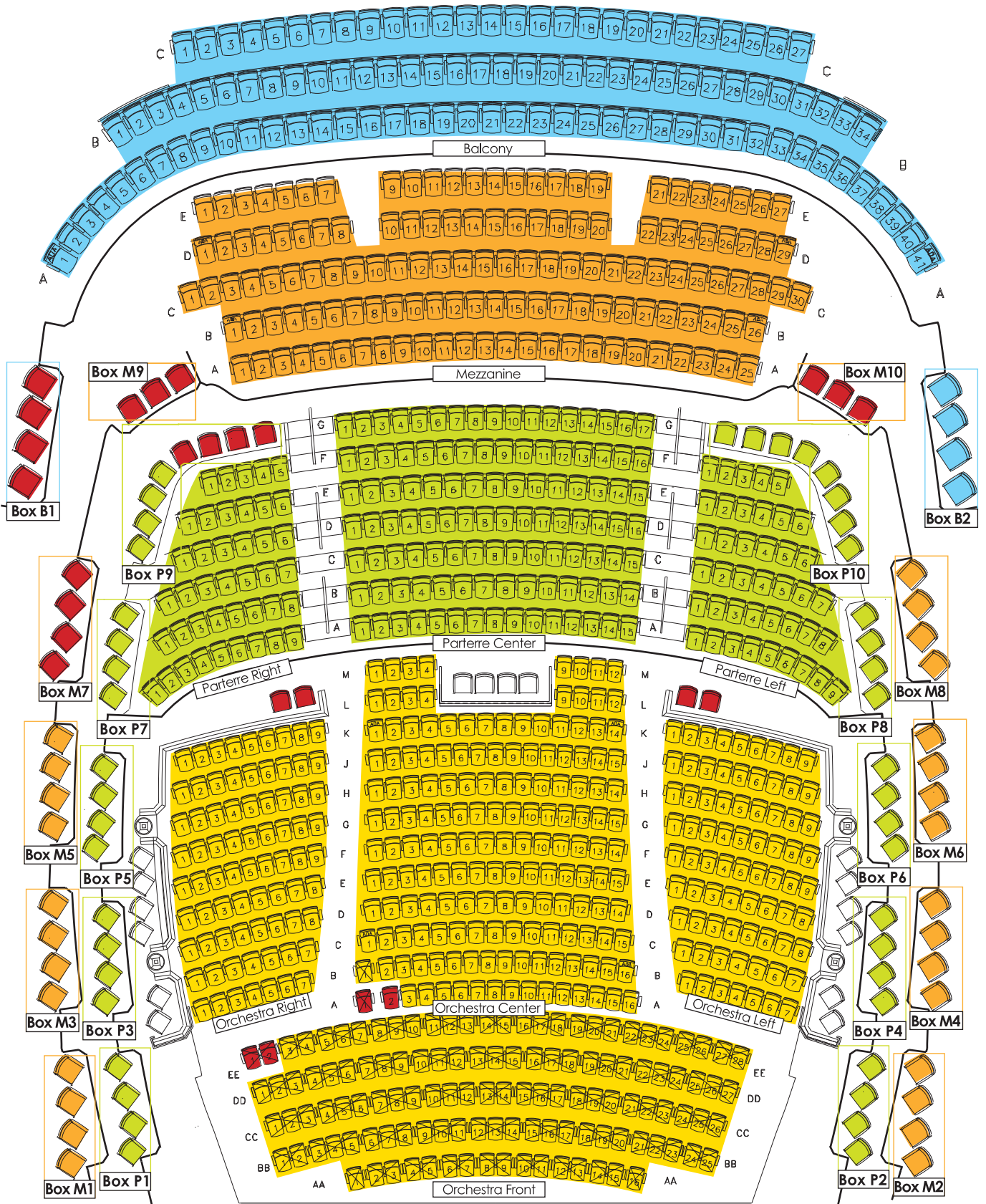
June Swaner Gates
Concert Hall (level 5)
0 5 10 15 20 FT



Lighting Equipment Key	
	Coloram II 4"
	Coloram II 7"
	ETC Source 4 PAR
	ETC Source 4 (50deg @ 750w)
	ETC Source 4 (190deg @ 750w)
	ETC Source 4 (190deg @ 575w)
	ETC Source 4 (26deg @ 575w)
	ETC Source 4 (36deg @ 575w)
	ETC Source 4 (50deg @ 575w)
	NSI 3 cell CYC (1kw per cell)
	Strone Xeon Supper Trouper Med (2kw)
	HES Cyberlight Turbo



Denver University Performing Arts Center - Gates Hall



Orchestra Level	\$?0	\$?0
Parterre Level	\$?0	\$?0
Mezzanine Level	\$?0	\$?0
Balcony Level	\$?0	\$?0